



**Greater Paramus  
Chamber of Commerce**  
The Business Hub of Bergen County

**Get involved and  
grow your business!**

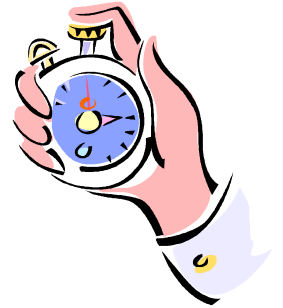


# 3-MINUTE NETWORKING

*Tuesday, March 3, 2009*

*7:30 am - 8:00 am - Registration & Breakfast*

*8:00 am - 9:30 am - Speed Networking*



**Westfield<sup>®</sup>**  
**Garden State Plaza**

**Hosted by:**  
Westfield Garden State Plaza  
Located in the Food Court  
  
Building Entrance #15  
(Lower Level of AMC Theatre Lot)

**Back by popular demand**, this event will be a fun-filled , table-hopping, networking experience. Invite your colleagues and friends to participate with you. The more people we have, the better the experience for all. Breakfast will be served. Bring plenty of business cards.

**Presented by: The Greater Paramus Chamber of Commerce**

**In Association with:**

Allendale Chamber of Commerce  
Bogota Chamber of Commerce  
Englewood Chamber of Commerce  
Fair Lawn Chamber of Commerce  
Fort Lee Chamber of Commerce  
Greater Hackensack Chamber of Commerce  
Lodi Chamber of Commerce  
Mahwah Regional Chamber of Commerce

Montvale Chamber of Commerce  
North Jersey Regional Chamber of Commerce  
Greater Oradell Chamber of Commerce  
Greater Paramus Chamber of Commerce  
Ridgewood Chamber of Commerce  
Rochelle Park Chamber of Commerce  
Greater Saddle Brook Chamber of Commerce  
Tri-County Chamber of Commerce

**Pre-Registration Required**      \_\_\_\_\_ **\$15 for Members**      \_\_\_\_\_ **\$25 for Non Members**

COMPANY NAME \_\_\_\_\_

CONTACT PERSON \_\_\_\_\_ PHONE \_\_\_\_\_

ADDRESS \_\_\_\_\_

\_\_\_\_\_

E-MAIL \_\_\_\_\_ FAX \_\_\_\_\_

\_\_\_ Check    \_\_\_ MasterCard    \_\_\_ Visa    \_\_\_ Amex

Name on Credit Card \_\_\_\_\_

Credit Card # \_\_\_\_\_ Exp. Date \_\_\_\_\_

Sign up on-line at [www.paramuschamber.com](http://www.paramuschamber.com) or mail/fax application in with payment  
58 E. Midland Avenue, P.O. Box 325, Paramus, NJ 07652 Ph: 201.261.3344 Fax: 201.261.3346